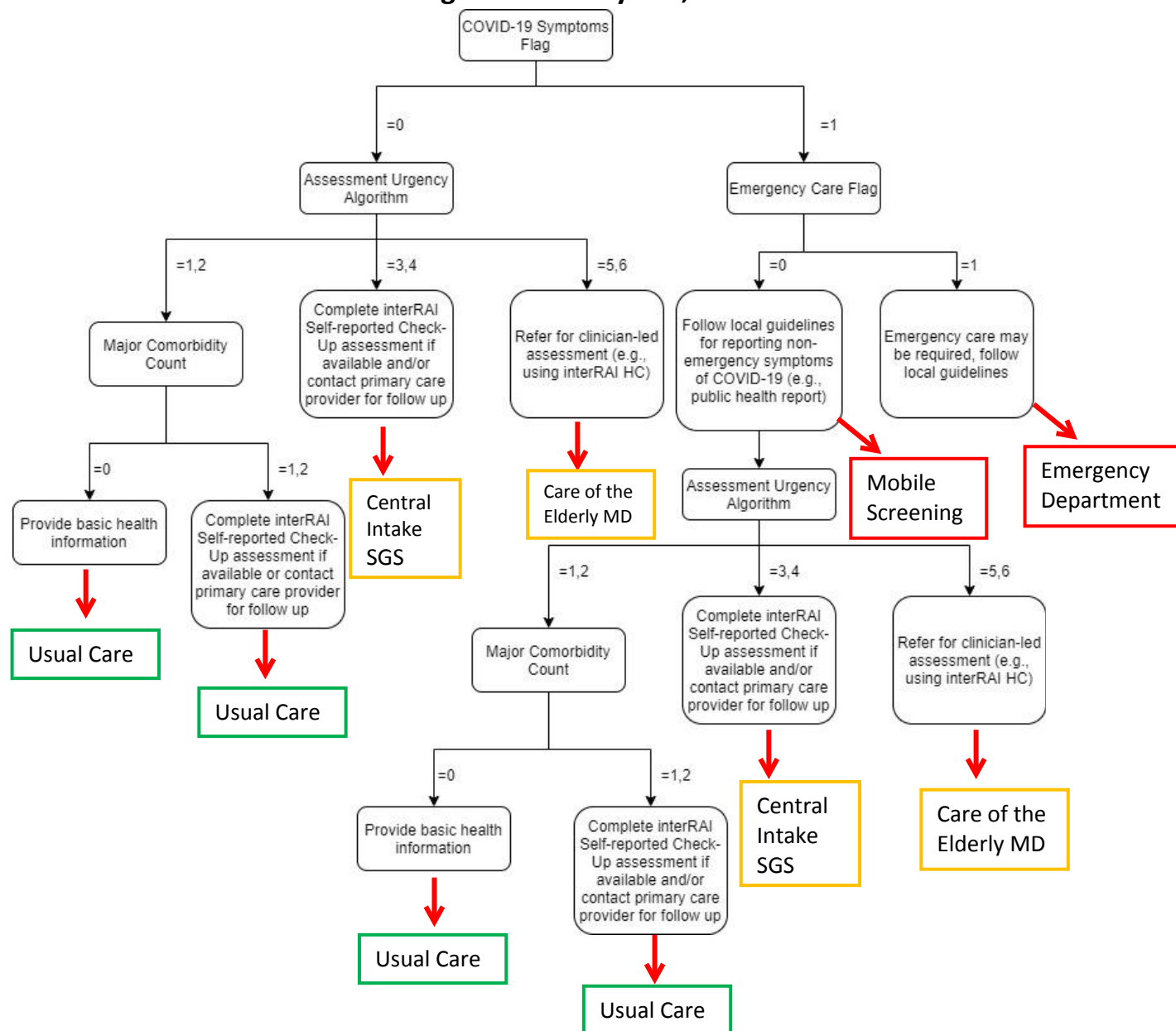


**Bruyere Family Health Team – interRAI COVID-19 Vulnerability Screener
Decision Algorithm – May 26th, 2020**



Glossary

Usual Care	PCP to follow as per usual care
Central Intake for Specialized Geriatric Services (SGS)	Screener to refer to Central Intake
Care of the Elderly MD	Screener to review with Care of the Elderly MD
Mobile Screening	Screener to initiate Mobile Screening
Emergency Department	Screener to review with Care of the Elderly MD