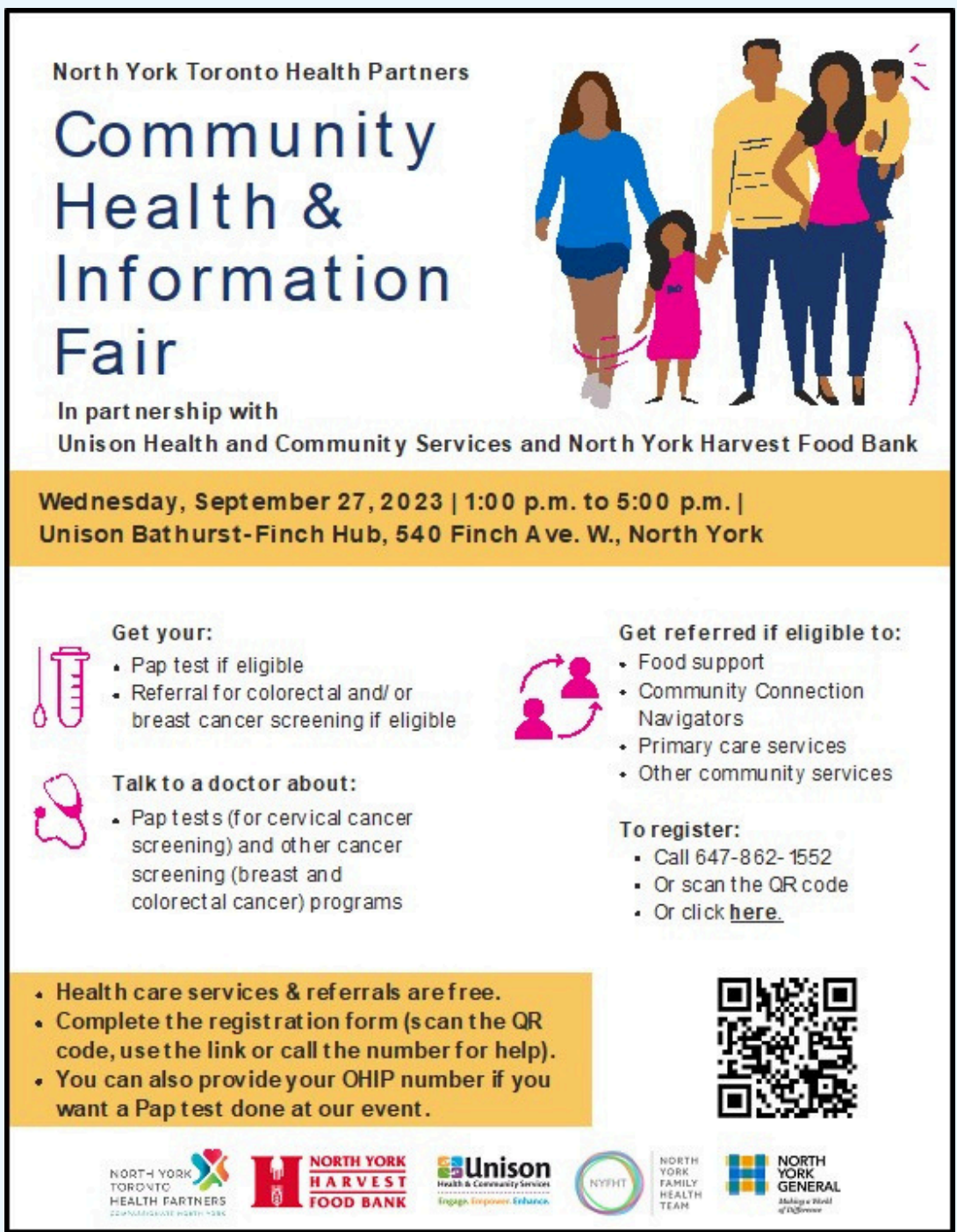


Offering Hyper-local Community Health and Information Fairs (CHIFs) through an Ontario Health Team (OHT) to provide Low-Barrier Access to Care - The North York Toronto Health Partners (NYTHP) Experience



Cassandra Kwok NP, NYFHT, Neil Shah, CEO/ED, NYFHT, Rebecca Stoller MD, CCFP, FCFP, Maria Muraca MSc, MD, CCFP, FCFP, Sheila Yuen MD, CFPC, FCFP, Adora Chui, PhD, Evaluation Scientist, NYTHP, Nike Onabajo, MSc, PMP Project Manager, OHT and Strategic Initiatives, NYTHP, Kyla Behar, Manager, OHT and Transformation, NYTHP, Alexandra Athanaselos, summer student, NYTHP, Orna Hollander, Logistics Coordinator, NYFHT, Jacqueline De Sousa Casal, Clinical Coordinator, NYFHT, Teresina Stanichevsky, Lead Ambassador, Working Women, Sabrin Daghishe, Project Coordinator, NYGH, Sabrina Von Vopelius-Feldt, Senior Communications Specialist, NYGH, Sally Moy, Manager, NYGH, Amanda Cheung, Communications Coordinator, NYGH, Ivy Wong, OHT and Transformation, NYTHP

Background



- NYTHP OHT is a partnership of providers including health care, social service and settlement organizations working together to design a system and deliver seamless care for patients
- North York is an urban community of approximately 500,000 in the north end of Toronto, composed of almost 60% visible minorities, and a high proportion of seniors (15%), lone-parent families (19%), and 20% of the population lives in low income neighbourhoods
- CHIFs launched to support access to health care and social support needs informed by learnings from COVID-19 vaccination clinics
- Monthly neighbourhood fairs are tailored to local needs
- CHIF cancer screening program in January 2023

Results

34 CHIFs with Cancer Screening to Date (May 2022 - Sep 2024)

- 1095 CHIF attendees
- 158 Cancer screenings completed (cervical, breast, colon cancer)
- 237 Blood pressure and 222 blood glucose readings

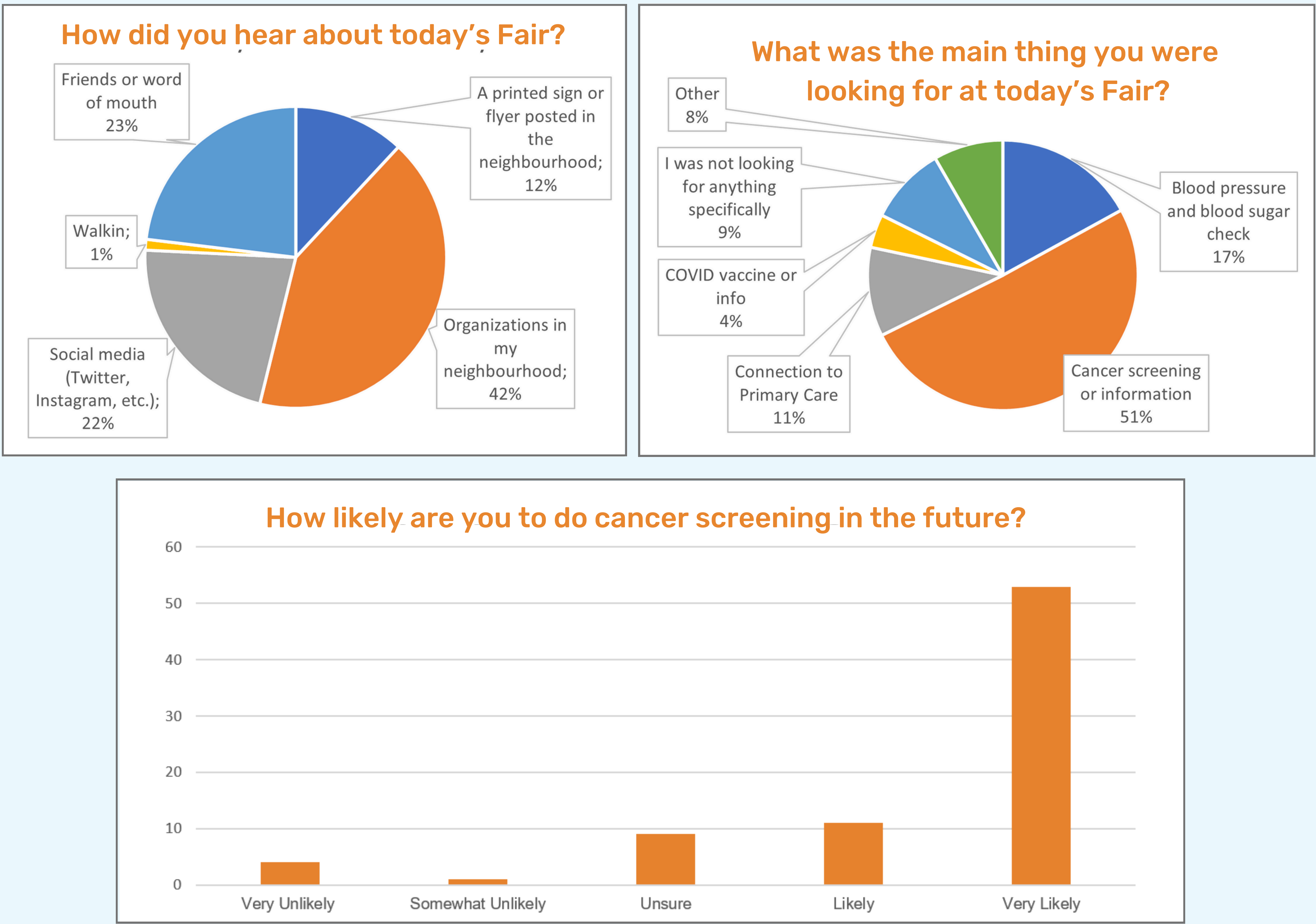
Cancer Screening

- 108 paps completed
- 33 mammograms ordered
- 17 FIT requisitions ordered
 - 3 referrals for colonoscopy

Population Served

- 57% came to Canada in the last 5 years
- 46% were most comfortable speaking a language other than English
- 68% of attendees were between the ages of 18-64
- **8 people attached to a PCP; others connected to primary care resources**

Surveys: Online Exit Surveys through MS Forms administered by Community Health Ambassadors



Key Partnerships

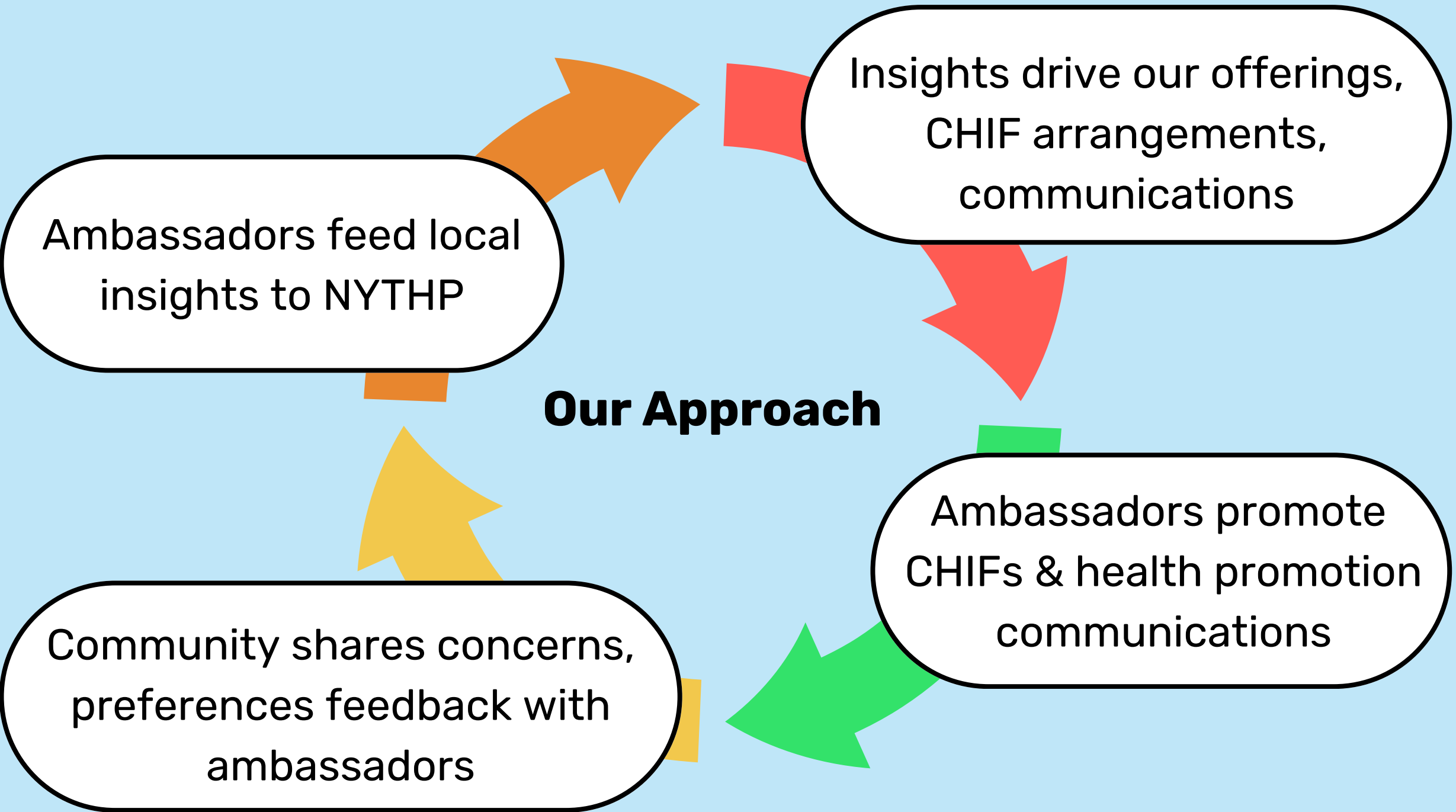
- Leveraged experienced, local Community Ambassadors to co-design and promote CHIFs
- Ambassadors provided outreach in priority neighbourhoods and across cultural groups in North York



- Ambassadors are:
 - Trained by NYTHP & Cancer Care Ontario (CCO) on cancer screening eligibility, accessing local health and social services and referral process
 - Play a key role in identifying local needs, gathering information and supporting bi-directional feedback
 - Provide trusted relationships with vulnerable communities and those who mistrust 'the system'

Program Objectives

1. Educate about services
2. Connect to services
3. Provide access to services



Program Description

Cancer Screening Process

Education seminars to health promoters (community ambassadors, Community Support Services (CSS) agency members)

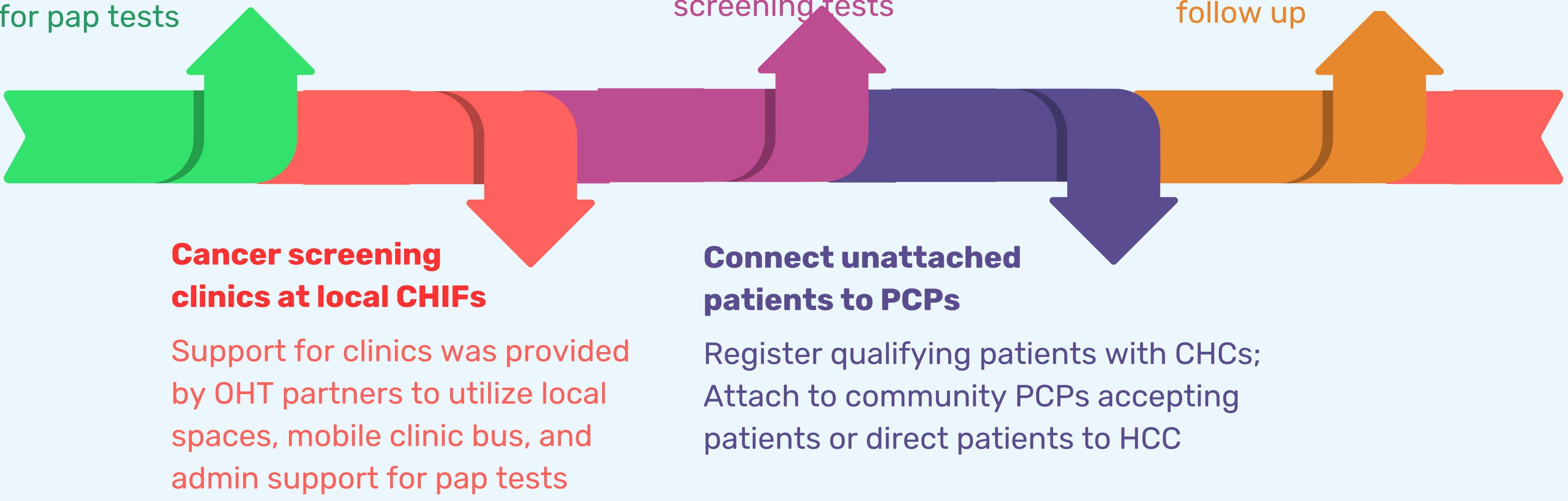
Education support, outreach of community members & invitation to attend Cancer screening clinic; Pre-registration of clients for pap tests

Education and provision of pap tests, mammogram requisitions and FIT tests

Presence of CCO for support and education; NYFHT NP as ordering provider for cancer screening tests

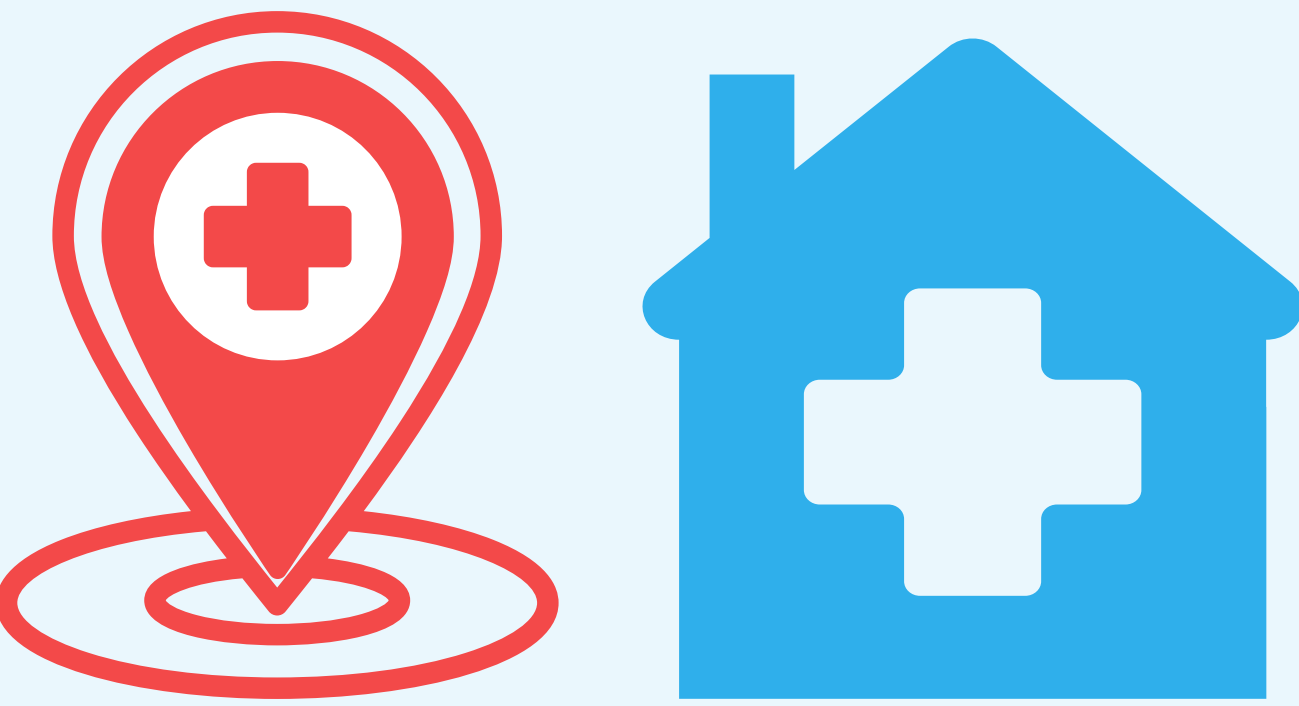
Follow up of results

NP reviews all results, provides appropriate referrals, and advises of appropriate follow up



OHT Partners provided Sites for Clinic Venues:

- North York Harvest food bank
- Oriole Community Centre
- North York Family Health Team
- Flemingdon Community Health Centres
- Unison Community Health Centre
- CareFirst Mobile Clinic Bus



CHIFs are "Hyper-Local" bringing Care to Neighbourhoods



Future Directions

- Continue to offer services, education and chronic disease screening with focus on unattached
- NP-led follow up clinic to diagnose, treat and support those found to have abnormal screening tests
- Identify other key areas of need from our ambassadors to guide CHIF offerings
- Ensure CHIFs are part of our Chronic Disease Management Pathway development

"Great fair, I feel lucky to attend this fair."
"It is really nice to know that healthcare service are made available for everyone without any barrier."
"Our community need more events like this."
"Great community, please continue to hold this fair."
-Attendees

"We got so many female clients turn up for the PAP test in spite of the snowstorm warning. It was so satisfying... Some of them were struggling to find a center to get tested."
-Ambassador

"Attendees came back after visiting the January CHIF and brought others with them to access the cancer screening offering and to get more information."
-Staff